

# Productive, Versatile Solutions

GENIE TELEHANDLERS

BTGO



# Customers First Always

## Partnering for Success

Our dedication to lifting you higher extends well beyond the physical reach of our products. We thrive on building satisfying customer relationships because you, our customer, are at the center of everything we do.

Since 1966, we've been developing products to solve your worksite challenges — and that process never ends. Our team of product managers and engineers uses your input to design new products that meet your changing needs. Then we manufacture those products to stringent standards that help increase quality, lower costs and give you exceptional value for years to come.

## Providing Superior Value

Our commitment doesn't end with the sale. Our dedicated service teams provide support when you need it most. Our extensive parts network ships all parts within 24 hours, too. Simply put, we're always working to help increase your "up time," so you can be more successful.

Genie is driven by one goal: doing the right thing, at the right time for our customers. That's not just what we do; it's who we are. So tell us what you need. We're listening.



**Setting the Standard: Terex Aerial Work Platforms (AWP) manufactures some of the most advanced, highest-valued lift equipment in the industry. Distinctive blue Genie® lifts set the standard for performance and durability — not to mention support from people who understand your business.**



## Multiply Your Return with Multi-Purpose Productivity

You can buy a range of machines to lift, move and place materials, or you can save money with one highly advanced multi-purpose tool — the Genie® telehandler. With outstanding design and performance, Genie telehandlers provide all-around utility for your challenging work site needs. With a full range of fixed and rotating power-packed models, Genie telehandlers offer exactly what you need for productivity in limited access areas or applications where a high reach is needed. With a wide range of attachments, Genie telehandlers have you covered.

Genie telehandlers deliver amazing value through their versatility.

# Big Performance In a Small Package

Lift. Move. Place. With the lift capacity of 2,500 kg (5,512 lbs) and a lifting height of 5.79 m (19 ft) m the Genie® compact rough terrain telehandler is the perfect choice for tasks both large and small. Easy to manoeuvre and convenient to service, with a variety of rugged attachments, the Genie® compact rough terrain telehandler meets the needs of most building, refurbishment, masonry, landscape, industrial and farming jobs. Excellent for rental applications, the compact GTH™ model is suited for a variety of uses and will provide high utilisation and a good return on investment.



## Operator Comfort

Everything about the compact telehandler's cabin is designed with the operator in mind. The engine throttle and foot brake pedals are positioned for comfortable use. The door opens a full 90° for easy entry. A chart holder puts operating information within easy reach. There's also a right-side armrest and a moulded pocket complete with a can/bottle retainer. Most of the switches have been grouped and relocated on the right side of the dashboard ahead of the joystick to simplify operations and help operators increase their productivity.

## Multi-Function at Multiple Sites

The infinitely variable hydrostatic transmission and four-wheel drive lets the Genie compact telehandler provide excellent terrainability. Three steering modes, including front wheel, coordinated and crab steer, provide a tight turning radius for increased maneuverability.



The Genie compact telehandler is designed to perform a full range of tasks in crowded, space-limited job sites.



### Designed for Serviceability

Interchangeable, common components plus easy no-tool access to daily inspection points make Genie® telehandlers as straightforward to service as they are to use.



### Compact Manoeuvrability

Lightweight and compact, the Genie telehandler is simple to transport to the jobsite and easy to manoeuvre once you're there. The GTH™-2506 cab measures 1.81 m in width and 1.92 m in height, so you can easily work inside garages and buildings where no other telehandler can go. In addition, this model is extremely manoeuvrable, thanks to a tight turning radius. Built to boost mobility, the Genie compact telehandler gets the job done in tight and congested areas with the capacity to lift up to 2,500 kg.

## Compact Rough Terrain Model

GTH™-2506

# Power to perform & Maximise Your Reach

Genie® 4,000 kg (8,818 lbs) capacity high reach rough terrain telehandlers have the reach and performance capabilities for demanding jobs. The High Reach models offer you lifting heights of 13.57 m (44 ft) to 17.61 m (58 ft), while a spacious cab and responsive controls enhance operator comfort. Superior handling capacity, precise positioning and a wide range of attachments available on all models will increase productivity on your worksite.



## Operator Comfort and Control

Experience exceptional control and comfort from the spacious cab. Simple, logical controls respond to your every command. The controls are easy to operate, and the joystick enables fast and precise positioning.



## Rugged Workhorse

The High Reach telehandlers offer excellent lift capacity, easily covering all your worksite needs. When you consider their outstanding vertical and horizontal reach, you'll continue to find productive uses for your Genie telehandlers every day.



The High Reach telehandlers are the ultimate solution for improving worksite productivity through efficient movement of material.



### Investment in Versatility

These models are highly versatile, especially when used with accessories such as the man platform, the winch or the jib with hydraulic winch. They are able to lift substantial loads, even without deploying stabilisers to increase your productivity on the worksite. A powerful turbocharged engine and four-wheel drive improve the terrainability and overall performance of these models.

### Superior terrainability

Very powerful with high torque, resulting in high climbing capacity with fast travel speed. The differential lock of the axle increases wheel traction for excellent efficiency on challenging conditions such as muddy or uneven terrain.

### Built-In Value

Components commonality and no-tool access to direct service points make

Genie high reach rough terrain telehandlers easy to service and manage. Engines are side-mounted to allow easy access to components for increased up time.

## High Reach Models

GTH™-4014

GTH™-4018

# Easy To Rotate

Genie® 4,000 kg (8,818 lbs) capacity rotating rough terrain telehandlers have the reach and performance capabilities for challenging jobs. These R (Rotating) models offer you lifting heights up to 17.54 m (57 ft 7 in), while a spacious cab and responsive controls enhance operator comfort. The rotating models are easy to operate, simple to maintain, reliable and cost effective which makes them a perfect choice for your rental yard. They are ideal for rough and dirty tasks where high lifting capacity and outreach is required.



## Powerful Performance

The rotating models provide excellent lifting capacity and great horizontal reach, even without deploying stabilisers, so you can easily move substantial loads like steel, masonry and bricks across the worksite. With a maximum forward reach of 15.53 m (50 ft 11 in) you can easily lift over obstacles.



## Operator Comfort and Control

Experience exceptional control and comfort in the spacious cab. Simple, logical controls respond to your every command. The easy-to-use, multifunction, proportional joystick provides fast and precise positioning with minimal operator effort. An optional joystick on the left side allows the turntable to rotate separately from the other movements.





## New Generation of Stabilisers (GTH™-4018 R)

The new patented stabilizers are controlled by a conveniently located control system. This user-friendly system will allow you to quickly, and easily deploy/retract the stabilizers.

Bigger pad area provides great stability and support for heavy loads without increasing the weight or width of the machine.



## Control System

The control system has been designed with the operator in mind. Users will quickly become familiar with the display panel which shows all parameters of the machine. The integrated general control system is very easy to use even if you are working with multiple attachments.

## Superior Serviceability

Components commonality and no-tool access to direct service points make Genie® R-series rough terrain telehandlers easy to service and manage. Engines are fitted between tyres to allow easy access to components for increased up time. The oil and tank filler cap have been modified to allow fast refill and easy maintenance.



## Rotating Models

GTH™-4016 R

GTH™-4018 R

# Proven Experience

The Genie® GTH™-5021 R is a rugged machine that offers excellent lift capacity of 5,000 kg (11,022 lbs), and maximum lifting height of 20.86 m (68 ft), with the advantages of turret rotation. This model has great lifting capacity when working with or without stabilisers.

## Great Stability

This model is able to lift substantial loads even without deploying the stabilisers. The heavy duty chassis allows high loading capacity and great stability.



## Handling performance

This machine is a perfect heavy-duty choice for loading, unloading, moving and placing loads on big and small construction sites. The GTH-5021 R can be used as a crane or as a man platform (with winch attachment) and reach places large cranes cannot access.

## Visibility

Efficient operation is provided through easy to use controls, and diagnostic gauges and load charts positioned with the operator in mind. Excellent jobsite visibility is apparent when you're sitting in the cab.

## New generation

With energy efficiency, simple operation and innovative serviceability features for straight-forward maintenance, the GTH-5021R, equipped with the latest engine designed to meet the new emissions legislation, will offer you high performance and is ideal for tough work in any environment.



## Component Commonality with GTH Family

The GTH-5021 R brings the whole GTH product family in line as extremely fast to operate and maintain. Apart from the boom and outriggers, features of the GTH-5021 R are following the GTH-4016 R & GTH-4018 R.



## Rotating Model

**GTH™-5021 R**

# Options and Attachments For Telehandlers

	GTH™-2506	GTH™-4014	GTH™-4018	GTH™-4016 R	GTH™-4018 R	GTH™-5021 R
<b>BUCKETS AND SHOVELS</b>						
LOADING SHOVEL 500 L	0					0
LOADING SHOVEL 800 L	0	0	0	0	0	
CONCRETE BUCKET 500 L MANUAL DISCHARGE	0	0	0	0	0	0
CONCRETE BUCKET 800 L MANUAL DISCHARGE		0	0	0	0	0
CONCRETE BUCKET 500 L HYDRAULIC DISCHARGE	0	0	0	0	0	0
CONCRETE BUCKET 800 L HYDRAULIC DISCHARGE		0	0	0	0	0
CONCRETE MIXING BUCKET 250 L FULL HYDRAULIC	0			0	0	0
CONCRETE MIXING BUCKET 500 L FULL HYDRAULIC		0	0	0	0	0
<b>PLATFORMS</b>						
FIXED MAN PLATFORM 2P/300-F		0	0	0	0	0
ROTATING EXTENDABLE MAN PLATFORM 3P/700-REM 4400		0	0	0	0	0
<b>LIFTING EQUIPMENT</b>						
MECHANICAL JIB 2 M/1250 KG	0					
MECHANICAL JIB 2 M/2000 KG		0	0	0	0	0
MECHANICAL JIB 4 M/900 KG		0	0	0	0	0
HYDRAULIC JIB WITH HYDRAULIC WINCH 4 M/900 KG		0	0	0	0	0
HYDRAULIC WINCH 4000 KG		0	0	0	0	0
HYDRAULIC WINCH 5000 KG						0
FIXED HOOK ON PLATE	0	0	0	0	0	0
BRICK HOLDER BASKET	0	0	0	0	0	0
<b>OTHER ACCESSORIES</b>						
FEM 2 PLATE AND FORKS KIT	0					
FEM 3 PLATE AND FORKS KIT		0	0	0	0	0
HYDRAULIC FORKS SIDE SHIFT +/- 100 MM	0	0	0	0	0	0
RADIO REMOTE CONTROL				0	0	0
<b>TYRES</b>						
SOLID TYRES	0					
FOAM FILLED TYRES	0	0	0	0	0	0
NON MARKING TYRES	0					

0 = Option

## Attachments for Genie® Rough Terrain Telehandlers range

Get more and do more without having to buy additional machinery. Just add one, two or more of the available attachments for your Genie® rough terrain telehandlers to get more productivity from a single unit. Attachments and accessories add job flexibility and improve efficiency. They can thus carry out a very wide range of tasks to efficiently meet the many and varied needs of a typical construction site or any industrial application.



# Standard Features

## Standard Equipment

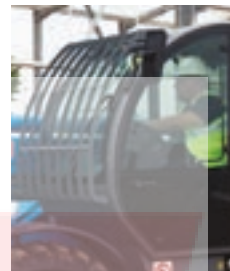
- Adjustable suspended seat
- Adjustable steering wheel
- Heating/ventilation
- Two-section door (glass upper/steel lower)
- Roof protection grid
- Two side rear view mirrors
- Fish-eye rear view mirror
- Front and rear lights
- Front and rear windscreen wipers
- Sunshield
- Proportional joystick
- Four-wheel drive and four wheel steer
- Hydrostatic transmission
- Limited slip differential on front axle (depending on models)
- Floating forks
- Hydraulic line on boom
- Lockable fuel tank
- Stabilisers (depending on models)
- Angle and length indicators on boom
- Road/Jobsite switch
- Maintenance collar

## Genie® Telehandlers are equipped with

- Longitudinal stability control system with: visible display and load moment indicator with LEDs, audible alarm, automatic lock-out of boom extension and lowering
- Automatic lockout of stabilisers and rear axle
- A range of motion corresponding to the attachment installed can be easily selected.



MAINTENANCE COLLAR



WINDSHIELD PROTECTION GRID

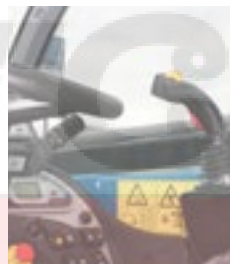


ROOF PROTECTION GRID

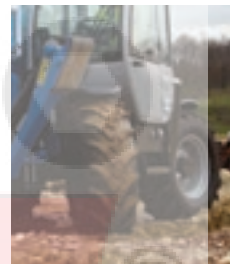
## Options and Accessories

### Cab Options

- Windshield protection grid
- Wiper on cab roof
- Air conditioning
- Additional armrest
- Adjustable spotlight
- 2nd joystick on left hand (Rotating models only)



MULTI-FUNCTION JOYSTICK



FOUR-WHEEL DRIVE  
FOUR-WHEEL STEER



DOOR IN TWO SECTIONS:  
STEEL LOWER, GLASS UPPER.  
EACH SECTION CAN OPEN  
INDEPENDENTLY

### Boom and Chassis Options

- Hydraulic chassis levelling
- 2nd hydraulic line on boom
- Electric pre-arrangement on boom
- Trailer Coupling 6 Ton
- Rear axle alignment sensor
- Continuous rotation
- Hydraulic Quick Coupling

### Accessories

- Spare wheel, including foam-filled spare wheel
- Foam-filled tyres
- Complete radio remote control



FISH-EYE REAR VIEW MIRROR



DURABLE MUD GUARD

### Standard Compliance

- EU Machinery Directive 2006/42/EC
- Operating cab conforms to ISO3471 (ROPS) and ISO3449 (FOPS)
- Low emission engine conforms to EU Directive 97/68/EC stage III and 2004/26/EC
- Noise emission conforms to EU Directive 2000/14/EC (LpA=83 dB, LwA=103 dB)
- Vibration levels according to EN13059:2002 (hand-arm <2.5m/s<sup>2</sup>, whole body 0.23m/s<sup>2</sup>)



MANUAL HOLDER IN DOOR



STEEL PROTECTED FRONT LIGHTS

# Specifications Telehandlers

MODEL	MAXIMUM LIFTING CAPACITY		MAXIMUM LIFTING HEIGHT		MAXIMUM FORWARD REACH		WEIGHT*		ENGINE
	METRIC	IMPERIAL	METRIC	IMPERIAL	METRIC	IMPERIAL	METRIC	IMPERIAL	
<b>Compact</b>									
GTH™-2506	2,500 kg	5,511 lbs	5.79 m	19 ft	3.35 m	10 ft 12 in	4,480 kg	10,097 lbs	Deutz Diesel 55.4 kW (74 HP)**/***
<b>Fixed</b>									
GTH™-4014	4,000 kg	8,818 lbs	13.57 m	44 ft 6 in	9.08 m	29 ft 9 in	10,140 kg	22,355 lbs	Perkins TD 74 kW (99 HP)**/***
GTH™-4018	4,000 kg	8,818 lbs	17.61 m	57 ft 9 in	13.36 m	43 ft 10 in	11,980 kg	26,411 lbs	Perkins TD 74 kW (99 HP)**/***
<b>Rotating</b>									
GTH™-4016 R	4,000 kg	8,818 lbs	15.42 m	50 ft 6 in	13.35 m	43 ft 10 in	12,900 kg	28,445 lbs	Perkins TD 74 kW (99 HP)***
GTH™-4018 R	4,000 kg	8,818 lbs	17.54 m	57 ft 5 in	15.53 m	50 ft 1 in	14,000 kg	30,870 lbs	Perkins TD 74 kW (99 HP)***
GTH™-5021 R	5,000 kg	11,022 lbs	20.86 m	68 ft	18.24 m	59 ft 8 in	17,180 kg	37,876 lbs	Perkins TD 83 kW***

\* Weight will vary depending on options and/or country standards.

\*\* Stage IIIA engine & Stage IIIB engine

\*\*\* Stage IIIB engine

